

Work and Resource Management

Connecting strategy and delivery enterprise-wide

At Planview our vision is simple:

To help organizations realize their work and resource potential

The business world is more complex, technological, and fast-paced than ever before. To keep up with rapid change and make better strategic decisions, you need greater visibility, transparency, and coordination across all the work being done and all the people and resources being deployed in your organization.

Work and resource management brings everything into view

By connecting strategy and delivery enterprise-wide, Planview's work and resource management solutions address the challenge of getting work done. And, more importantly, getting work done that delivers on strategy.

Focus on business capabilities and outcomes

Our work and resource management solutions make it easier to achieve your strategic plan. We break down silos, connect your teams, integrate your portfolios, and provide executive level visibility into how it is all coming together. Which means you can transform your vision of innovation, growth, and exceptional customer experience into reality.

Higher stakes
and increased
complexity...

Digital
Transformation
of Every Industry

Increasing
Pace of
Innovation
(or Disruption)

Convergence
of Products
and Technology

Fundamental
Shifts in the
Workforce

... in connecting
strategy and
delivery

Planview work and resource management solutions are designed for strategic planning, portfolio and resource management, Lean and Agile delivery, product portfolio management, capability and technology management, innovation management, and collaborative work management.

- > Operationalize execution of strategic plans
- > Ensure limited resources are on strategy
- > Advance the capabilities required to deliver strategy
- > Optimize your technology portfolios
- > Strengthen execution from programs to projects to teams, no matter how you work

"Work and resource management is about strategically applying our people, processes, and technology in order to maximize the value of our constrained resources."

Christine Strobush

VP, Transformation Office and Health
Flowserve Corp

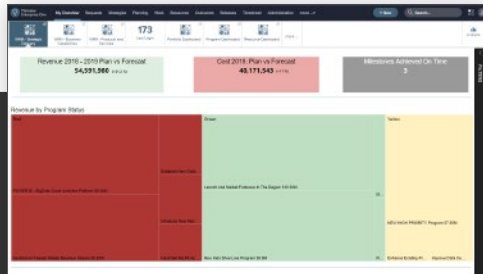
PLANVIEW®
KNOW YOUR IMPACT

Deliver innovative products, services, and customer experiences

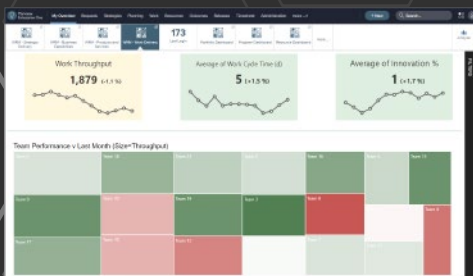
Our work and resource management solutions, combined with our commitment to customer success, deliver high-impact business results for organizations worldwide:

- > 25% increase in realized spend on strategic priorities
- > 30% acceleration in time to market and reduced cycle time
- > 25% reduction in support costs by decreasing non-standard technologies
- > 20% of capacity shifted from business as usual to strategic initiatives
- > 30% delivery speed improvement and work productivity gain
- > 50% increase in project completion rates

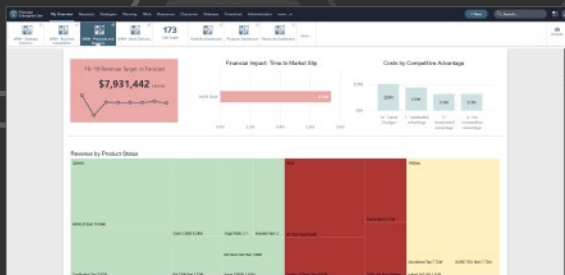
Transforming with Planview Work and Resource Management



Deliver the initiatives and programs that will transform your organization



Promote team productivity and mature business capabilities with insights into current performance and future goals



Drive top-line growth and cost savings with a product-focused outlook

Planview serves over 5,000 customers worldwide through a culture of innovative technology leadership, deep market expertise, and highly engaged communities.

To learn more, visit: Planview.com.

