

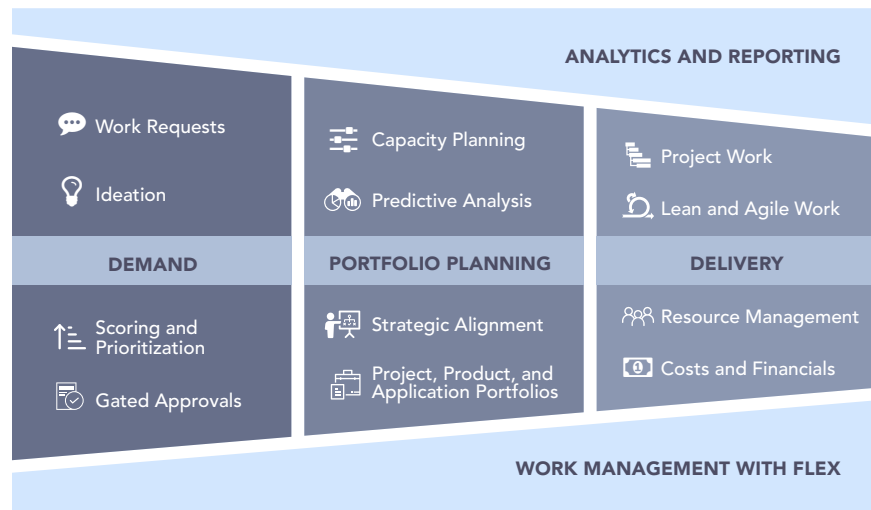
DATA SHEET

Planview PPM Pro

Mid-tier Project Portfolio Management

Today's organizations are facing too many requests and not enough resources to achieve all the strategic and operational demands.

Planview PPM Pro™ centralizes the management of projects and resources, facilitating governance, and providing visibility for improved decision making. Whether you are just getting started or advancing your PMO to the next level, Planview PPM Pro provides the ability to collect, prioritize, and execute projects, enabling PMOs to focus resources on the work that delivers the most value.



A Single PPM Solution to Accelerate PMO Success

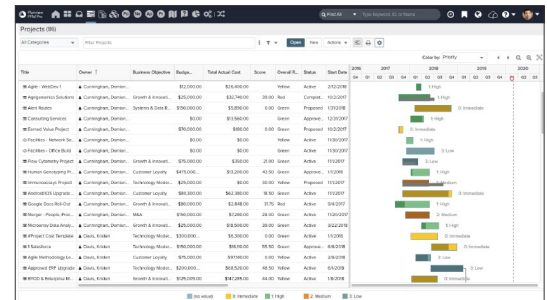
Get out of managing projects in complex spreadsheets or disparate tools and get visibility into all work and resources. Streamline project effort into a single source of truth for integrated and informed decision making. Planview PPM Pro gives you the ability to align your centralized project portfolio to achieve business outcomes through resources, projects, and financials and deliver value to the organization.

- **Portfolio Planning:** Select the right projects that bring the most value to the business
- **Financial Planning and Portfolio Management:** Manage project schedules, tasks and resources, and the underlying financials to deliver on-time and on-budget
- **Demand Management and Resource Capacity Planning:** Manage work requests in one place and evaluate and make trade-off decisions based on available resources
- **Dashboards and Reporting:** Measure, manage, track, and report on all work for better decision making
- **Resource Management:** Ensure resources are working on the most important projects and understand resource capacity to appropriately staff those projects
- **Planview FLEX:** Provide Lean-Agile and collaborative tools so teams can deliver their best work, no matter how they work

Prioritize Your Project Portfolio with Top-down Planning

Take a top down approach to ensure the organization is focused on the right things, at the right time. Create a systematic process to strategically align projects to meet business goals. Identify projects that do not warrant investment by creating scenarios that allow analysis from all viewpoints, from objectives to cost. Prioritize the highest-value projects and determine what can realistically be completed based on resource capacity and budgets.

- **Centralized portfolio:** Stop managing projects in complex spreadsheets or disparate tools. Get visibility into all work and resources, streamlining project effort into a single source of truth - establishing governance and improve overall delivery
- **Top-down portfolio planning:** Organize projects in any number of portfolios, or contribute different amounts across multiple portfolios, for all key stakeholders – create as many portfolios as required to drive business alignment
- **Scoring:** Gather scores from across the organization throughout the project lifecycle for prioritization of the highest value work and requests
- **Predictive Portfolio Analysis:** Identify the optimal mix of projects: Predict, plan, and re-plan a balanced portfolio of projects and resources. Optimize the delivery to business goals, increase agility, and save time and money



Centralized project planning enables visibility. Communicate with stakeholders to meet strategic goals



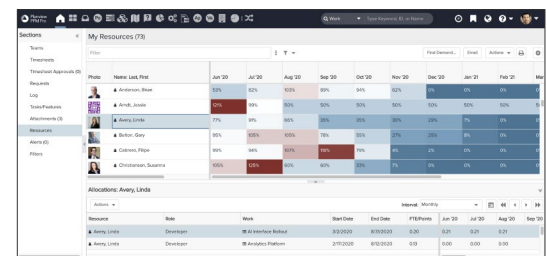
Identify, plan, and work on the optimal projects for each portfolio

Be Confident that Resources are Working on the Right Projects

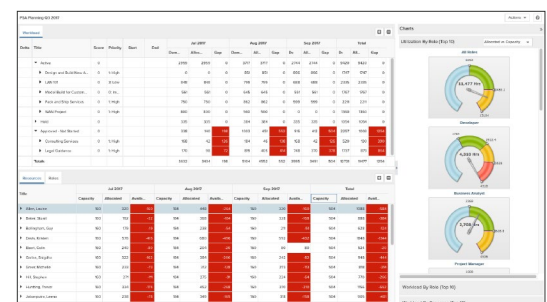
Proactively allocate resources and improve delivery across your entire project portfolio. Resource management capabilities in Planview PPM Pro help ensure people are working on the highest value work. Improve on-time project delivery and view resources in real-time to analyze utilization. Set the right expectations and accurately communicate what the organization can and cannot complete given resources constraints.

- **Manage requests:** Collect work requests and incoming demand for new project initiatives and evaluate what work to take on
- **Demand and capacity planning:** Effectively plan for future work with forecasting, what-if analysis, and role-based planning
- **Time tracking:** Track actual hours on projects to improve expense management, capitalization, and resource utilization
- **Real-time data:** One-click reporting to provide quick at a glance views into what your resources are investing their time/efforts

Planview PPM Pro offers a complete picture into all resource commitments on all projects.



Optimize resources by individual, role, or skillset

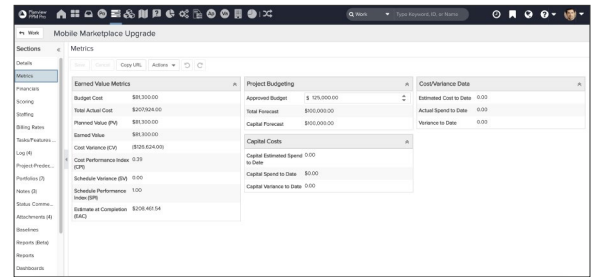


Visualize resource constraints and utilization. Make tradeoffs in real time for better resourcing decisions

Deliver On Time, On Budget

Focus on highest impact work and align your resources and projects with organizational goals. Improve planning and project delivery across your entire project portfolio with visibility into the plan, tasks, financials, and more. Deliver the projects that align strategically to company objectives.

- Stay on budget for every project in your portfolio with expense tracking and reporting
- Execute the strategic projects that contribute to innovative and transformative initiatives for the business



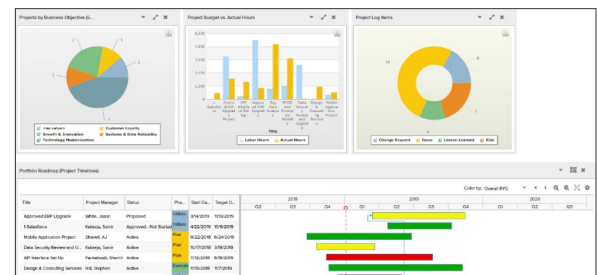
Monitor budgets and actuals to report on the financial performance of initiatives and stay on track with KPIs

Dashboards and Reporting

Visibility is power. Centralize and gain visibility into projects and portfolios to accelerate PPM time-to-value for the business.

Planview PPM Pro provides highly configurable dashboards and out-of-the-box reports so you can facilitate conversations with stakeholders.

Create dashboards and reports by department, role, or even individual, providing relevant information in real-time, then easily drill down to get the details that you need. View the impact on key performance indicators enabling you and your stakeholders to make better decisions.

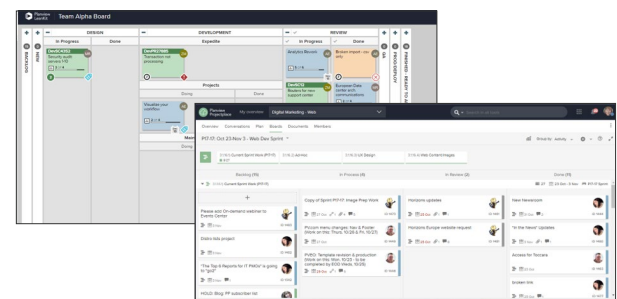


Visual dashboards and reports simplify analysis and monitoring of project health

Empower Teams with FLEX: Accelerate Team Delivery, No Matter How They Work

A one-size-fits all approach to work delivery is no longer viable for teams looking improve responsiveness and speed delivery. Today's enterprise is embracing a combination of these work approaches to increase the success rate of strategic delivery.

Teams can leverage different delivery experiences while ensuring overall strategic alignment – whether teams are adopting agile approaches, needing collaborative workspaces, or using traditional PPM methods.



Teams can deliver how they choose – whether they are project or process driven

Integrate Your Core Applications with Planview PPM Pro

Seamlessly integrate applications your business relies on every day with Planview PPM Pro

Planview Integration-as-a-Service (IaaS) is a proven approach to speed delivery, cut costs, and de-risk implementation. Automate information flow between Planview solutions and any other application, be it cloud or on-premises, off-the-shelf, or homegrown.

Planview's Agile Integration Capabilities powered by Tasktop enable bi-directional synchronization across Jira and other agile lifecycle management tools for centralized visibility into the work delivered across teams and alignment to strategic initiatives.

Accelerate Time to Value and Results

Customer success: This is what drives us every single day. Success is achieved by more than just software, and we support your journey in many ways, including:

- **Planview FastTrack:** These outcome-focused, adoption driven implementation packages offer a low risk and fixed-price approach to fast, successful rollouts with the right capability profile for your needs
- **Planview Customer Success Center:** One place for all Planview training, enablement programs, best practices, and more – everything you need to get the most from Planview PPM Pro while speeding time to value
- **Inner Circle Program:** Collaborate and influence the product direction by working directly with our product managers to discuss direction, prioritize enhancement requests, and provide feedback on proposed designs
- **The Planview Customer Community:** Connect with other customer users and share best practices to advance portfolio and work management in your organization

Portfolio and Work Management with Planview PPM Pro

Planview PPM Pro is Planview's mid-tier PPM offering that accelerates PMO and project success across the enterprise.



- Gives IT PMOs a top-down approach to project prioritization, resource management, and capacity planning. Provides the visibility and reporting needed to advance delivery and support strategic goals
- Enables product development organizations to mature their idea-to-launch process, pick winning products, increase portfolio value, and speed time-to-market

Get Started with Planview PPM Pro

Planview PPM Pro is the ideal solution to help your organization get to the next level of success. Achieve fast time-to-value benefits for your organization, no matter where you are on your project portfolio management journey.



To learn more about Planview PPM Pro, visit [Planview.com/PPM-Pro](https://planview.com/PPM-Pro).

For a deeper dive into the product, [watch a demo](#).