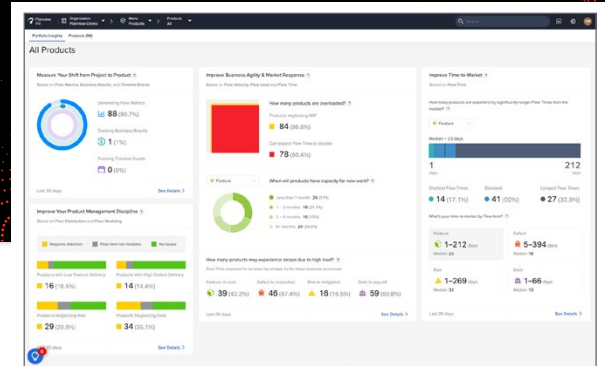


**AUTOMOTIVE MANUFACTURERS AND SUPPLIERS**

# DRIVE INNOVATION FASTER



**Can you deliver a turbo-charged, customer-centric vehicle experience today?**

The automotive industry is changing rapidly due to emerging technologies. This requires creating new automotive ecosystems that can meet evolving mobility needs while incorporating digital technologies in a safe, scalable, and sustainable manner. Planview offers market-leading portfolio and value stream management solutions for connected work. Our comprehensive platform enables automobile manufacturers and suppliers to focus on strategic outcomes, empower teams, and deliver competitive products and services.



**Accelerate innovation in a new era of automotive**



**Connect teams to increase efficiency and reduce costs**



**Mitigate risks in the crucial pursuit of connected, sustainable automotive products**

*“Today we can integrate different software products with each other much more quickly than before and at the same time we are able to gain new insights from our data and use them to become better and faster.”*

– René Te-Strote, Senior IT Project Leader, BMW

**Key Benefits**

**✓ Improve time-to-value**

Bring digital products and services to market faster

**✓ Seize market opportunities**

Pivot and replan with agility

**✓ Enhance Productivity**

Streamline collaboration and reduce cycle time

**✓ Increase top-line growth**

Achieve revenue goals and meet customer expectations

**✓ Make data-led decisions**

Strategic initiative investments backed by real-time data

**✓ Decrease risk exposure**

Quickly understand and address external and internal risks

## Why Choose Planview?

Planview® enables automotive organizations to align strategy with execution, optimize investments, and enhance agility through real-time, data-driven insights.

**Panasonic**  
AUTOMOTIVE



## How We Do It

### ✔ Single Pane of Glass Visibility:

Provide organizational transparency and alignment with a centralized view of initiatives, from idea to delivery to outcome.

### ✔ Alignment of Strategy and Execution:

Ensure that strategy informs execution and vice versa, through scenario planning, connected OKRs, and real-time delivery metrics.

### ✔ Data-Driven Approach:

Utilize metrics focused on customer value to guide decision-making, reveal problem areas, and optimize investment for speed, velocity, and quality.

### ✔ Planning Agility:

Adapt with speed and make smart decisions in response to change by employing dynamic planning and prioritization tools.

### ✔ Powerful Connectivity:

Streamline cross-organizational workflows via 60+ seamless integrations that enhance communication and reduce manual work.

The Planview Platform can help automotive companies improve operational efficiency, reduce costs, mitigate risks, and drive growth and innovation in today's dynamic and highly regulated business environment. With decades of experience collaborating with Automotive suppliers and OEMs, Planview is well-equipped to address the distinct challenges posed by disruptive market shifts. Planview offers market-leading portfolio management and value stream management solutions for connected work. Our comprehensive platform enables automobile manufacturers and suppliers to focus on strategic outcomes, empower teams and deliver competitive products and services.

To learn more, visit <https://www.planview.com/lp/automotive/>

