

## Solution brief

# Resource Management and Capacity Planning Solution

High demand will always cause overcommitted resources. How your organization evaluates that demand can free up valuable capacity, and assessing resource availability during your prioritization process can lessen overutilization pains.

However, research shows that more than 66% of organizations<sup>1</sup> lack insight into capacity and demand, making it difficult, if not impossible to achieve these goals.

What's at stake? For IT organizations, those less adept at capacity planning report that 72%<sup>2</sup> of their resources are overcommitted; their counterparts in Product Development, 77%<sup>3</sup>.

The costs are high. Organizations that can't reign in this problem report<sup>4</sup>:

- 52% - Are unable to complete projects on time
- 39% - Can't innovate fast enough
- 38% - Have increased project costs

If this sounds familiar, it's clear you are not alone. It's for exactly this reason that we developed Planview Enterprise®. This resource and portfolio management solution gives you complete visibility into enterprise-wide demand as well as your resources; its powerful capacity and resource planning capabilities let you plan and manage your people against demand across all projects, programs, and portfolios more effectively than ever before.

## Capacity Planning

Capacity planning is ongoing: you conduct it at the start, when you prioritize projects, and again as you adapt plans to change in execution.

Planview Enterprise streamlines the capacity planning process, allowing you to:

- View all enterprise demand and map it against resources
- Build multiple what-if scenarios to see the impact of changes
- Conduct capacity analysis to avoid under—and over—allocating resources

You get insight to make strategically sound decisions, to optimize capacity while de-risking your plans.

## Resource Management

With plans in place, you need to focus resources on the right priorities and ensure they deliver strategic outcomes.

Planview Enterprise helps you balance resources across all your projects and work, with features that offer:

- Comprehensive insight into who is doing what
- How projects are progressing
- Where intervention is required to ensure successful delivery

You get the flexibility to move people as needed to keep your entire team directed at the right goal.

# Optimize Capacity

See how capacity matches up to demand. View resources by role, department, geography, utilization, and more, to make smart planning decisions.

When strategies change, adapt quickly with multiple what-if scenarios that show the impact on project timelines, financials, demand, and more.

With Planview Enterprise, you have the tools you need to reduce risk across all projects and build in success factors for accurate, on-time execution.

Resource ID	Rank	Portfolio	Q1 2017 (M)	Q2 2017 (M)	Q3 2017 (M)	Q4 2017 (M)	Q1 2018 (M)	Q2 2018 (M)	Q3 2018 (M)	Q4 2018 (M)
ABC Resource Role: CDD Engineer		Ranking Co.	5,882.00	6,148.00	6,228.00	6,053.00	6,053.00	6,053.00	6,053.00	6,053.00
ABC Resource Role: Design Engineer		Ranking Co.	23,750.00	23,750.00	23,750.00	23,750.00	23,750.00	23,750.00	23,750.00	23,750.00

Assess capacity by role to maximize capacity allocation.

# Visualize Enterprise-wide Demand

It's essential to know committed and forecasted work before you allocate your resources. Planview Enterprise shows you demand from all parts of the enterprise, demonstrates how it will affect any portfolio, and enables you to assess project requirements and scope.

It simplifies demand management with a centralized location to:

- Request work
- Delegate requests
- Check status
- Review lifecycles

You'll build more reliable forecasts for future work with an understanding of what your resources accomplished and their actual effort, with the ability to baseline, track trends, and create a realistic future demand profile.



Optimize plans with reports that provide counts of work requests by various attributes

# Pinpoint Resources and Utilization

Resource management is all about visibility: knowing whom you've got, what they can do, where they are, and what will happen if you move them.

With Planview Enterprise, you can:

- See all your people and projects in one dynamic view
- Track real-time supply and demand
- Allocate global staff by expertise, skill set, availability, and more
- Manage utilization to keep everyone on track without burnout

Resource Name	Work Status	Work Type	Schedule Start	Schedule Finish	3/1/2016	4/1/2016	5/1/2016	6/1/2016
David Smith					19.26	13.20	22.16	
Mike Owens	Request	Single - Waterfall	3/25/2016	5/1/2016	41.65	34.40	18.76	

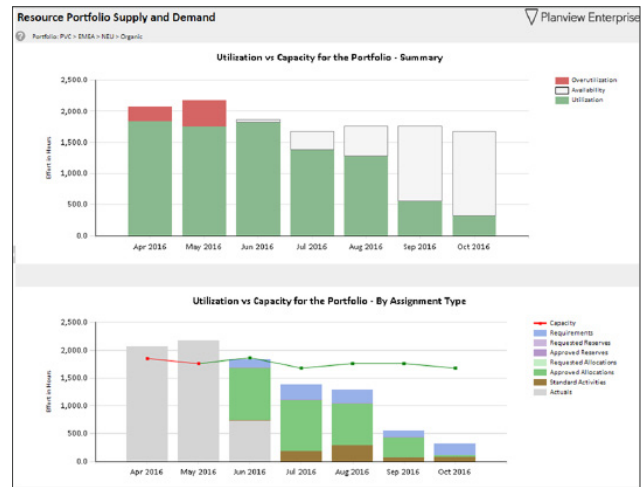
Get one view into your people and projects to improve utilization

## Balance Your Resources

You must innovate and support new initiatives while you maintain and enhance current offerings and services.

Balancing demand for existing skills while expanding skill sets is key to project success and staff motivation. Planview Enterprise can help you find that balance, so you'll always have the skilled people available for needed projects.

Planview Enterprise gives you insight into the enterprise-wide portfolio of work and effort. This helps you contextualize company strategy against the framework of both resource utilization and building out your staff's skills pipeline.



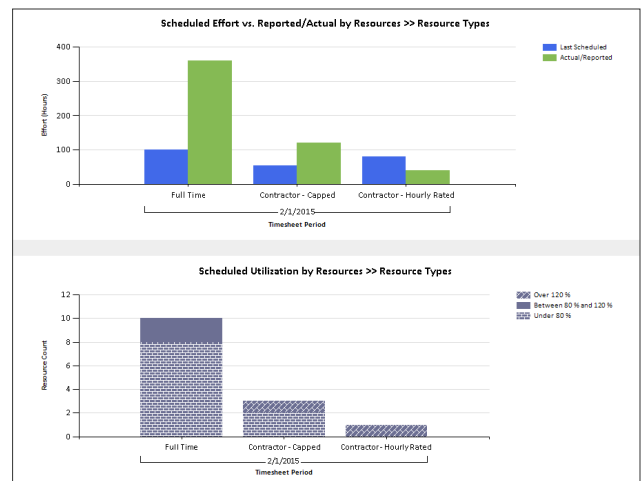
Compare demand to capacity to find the right balance for your work and people – pivot by resource and time dimensions to ensure the optimal scenarios

## Use Analytics to Demonstrate Performance

Use the industry's most comprehensive analytics to illustrate and communicate the impact of the work your resources affect.

Advanced analytics and reporting can help you demonstrate how strategic changes influence projects and portfolios. Leverage capabilities that let you:

- Better understand actual costs and value of each project
- Display and communicate performance
- Illustrate trend analysis for future planning



Resource analytics illustrate the effectiveness of your people, and identify areas for improvement

## Get the *Competitive Capacity Advantage*

80% of organizations that excel at capacity planning act on new opportunities in hours instead of days or weeks.<sup>5</sup> They report having far fewer unplanned projects<sup>6</sup>—those fire drills that keep you from executing strategy.

How do they achieve this advantage? Practice, discipline – and the right tools. They all rely on scalable, purpose-built capacity planning software<sup>7</sup>, not spreadsheets, desktop products, or cobbled-together “solutions” to get them by.

This puts them in the position to:

- Make strategically sound decisions quickly
- Execute to the desired outcome
- See all demand across the enterprise
- Visualize all capacity and allocate talent optimally

Planview Enterprise is the right choice for many looking to achieve a competitive capacity.

Find out if we're the right solution for your organization with a demo of our resource and capacity planning capabilities.

Contact us at [market@planview.com](mailto:market@planview.com)  
or visit [Planview.com/Planning](http://Planview.com/Planning)

---

1 Planview - 2016 Resource Management and Capacity Planning Executive Insight. (2016). Resources.planview.com. Retrieved 8 September 2016, from <http://resources.planview.com/i/703749-2016-resource-management-and-capacity-planning-executive-insight>

2 Resource Management and Capacity Planning for IT Leaders - Planview. (2016). Planview. Retrieved 7 September 2016, from <http://www.planview.com/resource-management-capacity-planning/it/>

3 Resource Management and Capacity Planning for Product Leaders - Planview. (2016). Planview. Retrieved 7 September 2016, from <http://www.planview.com/resource-management-capacity-planning/product/>

4 Planview - 2016 Resource Management and Capacity Planning Executive Insight. (2016). Resources.planview.com. Retrieved 26 October 2016, from <http://resources.planview.com/i/703749-2016-resource-management-and-capacity-planning-executive-insight>

5, 6, 7 Ibid

